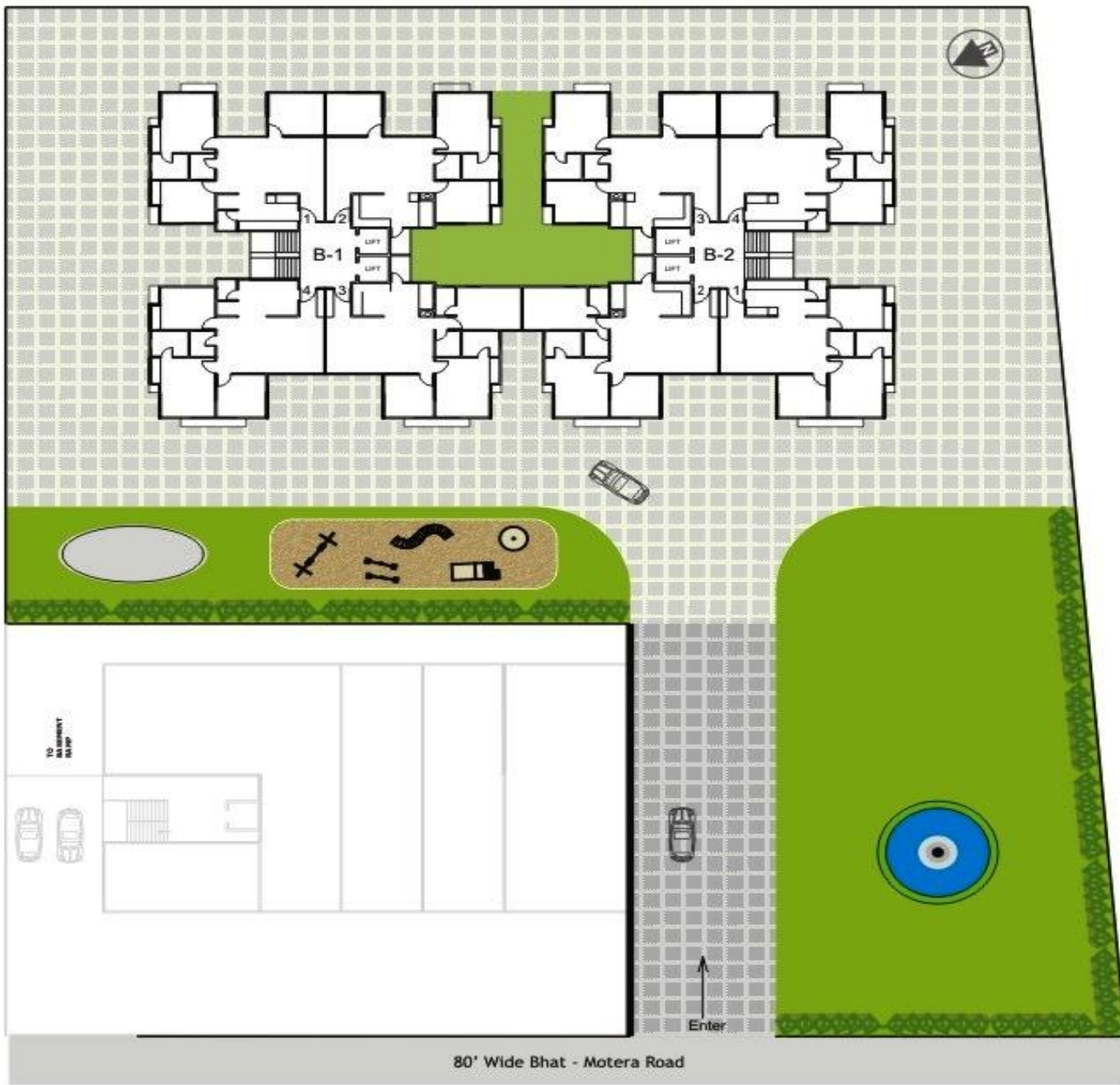


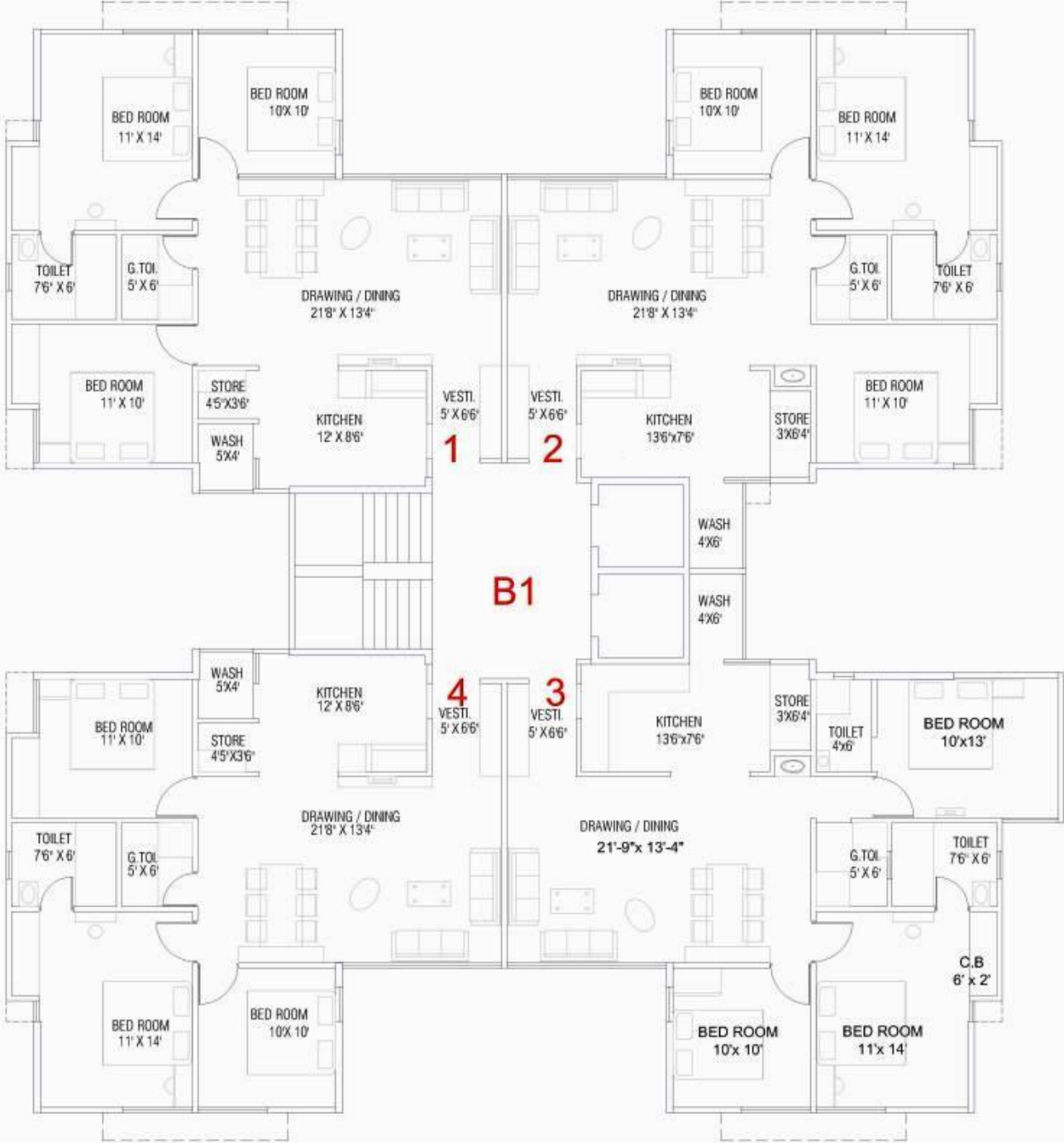
*Breathe easy !*







Layout Plan



**skyz**  
3BHK

**Bldg:- B1  
1-6<sup>th</sup> floor flat  
without Balcony**

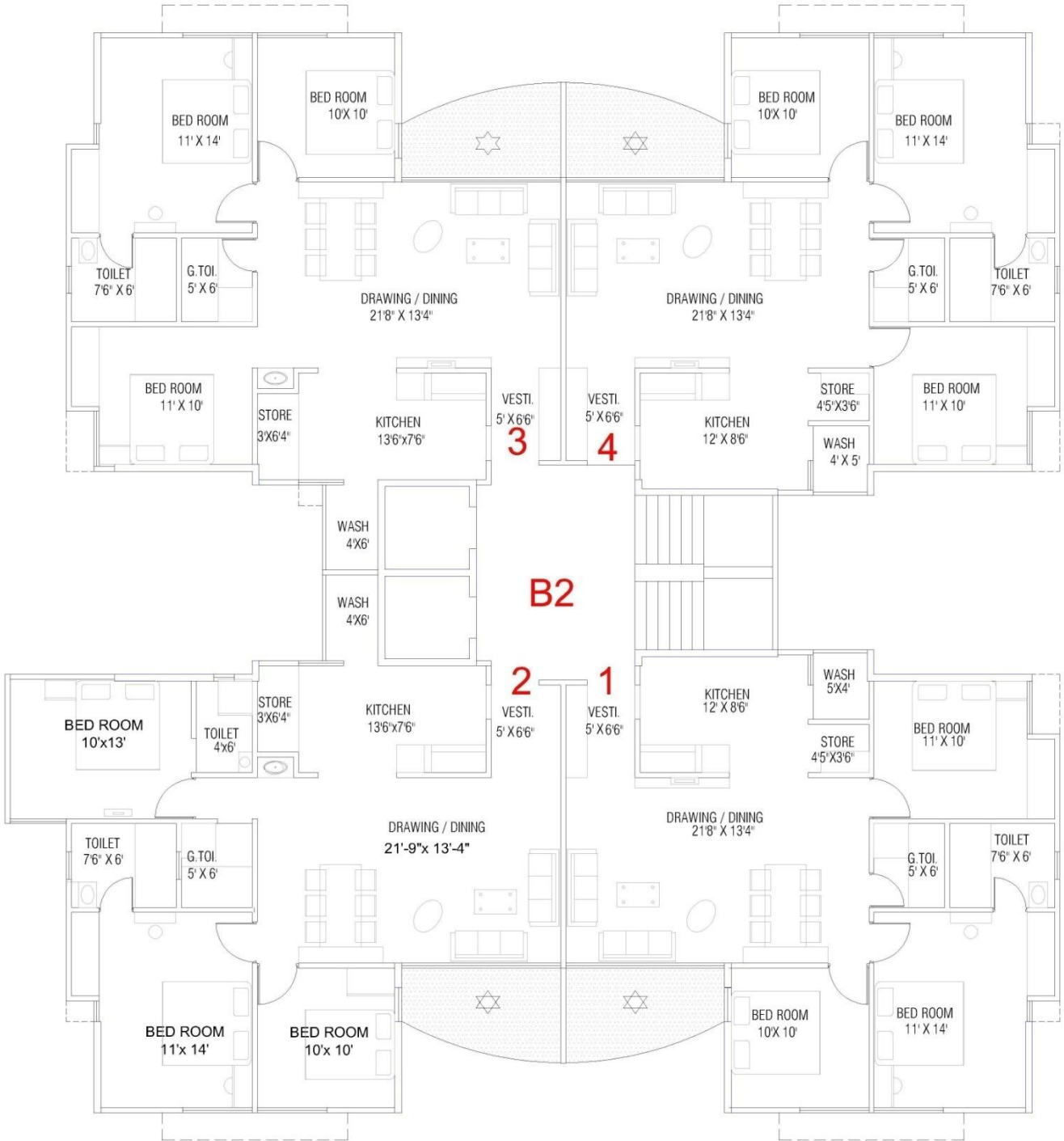


**Bldg:- B2**  
**1-6<sup>th</sup> floor flat**  
**without Balcony**



**skyz**  
3BHK

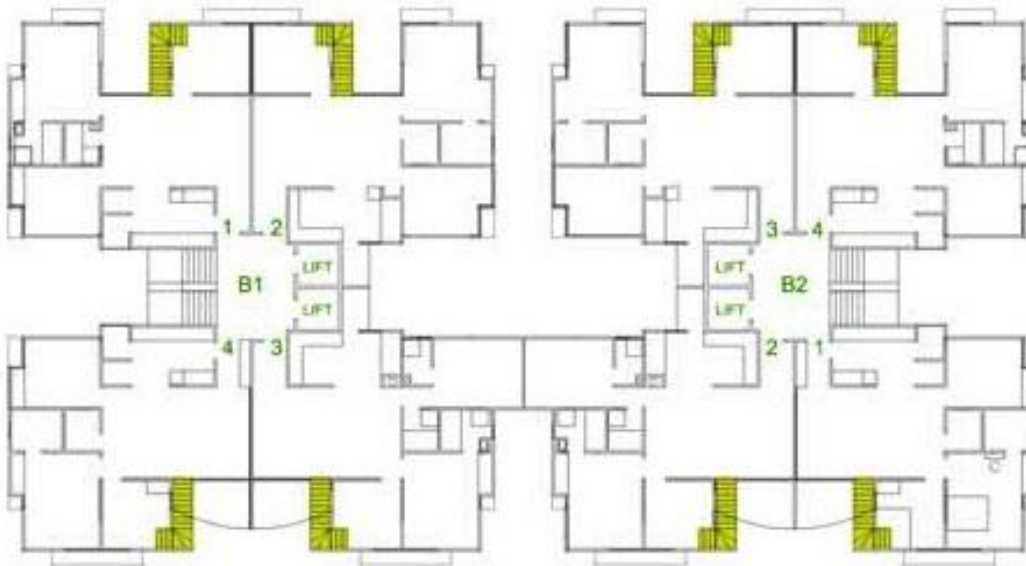
**Bldg:- B1**  
**7-12<sup>th</sup> floor flat**  
**with Balcony**



**Bldg:- B2**  
**7-12<sup>th</sup> floor flat**  
**with Balcony**



Terrace Plan



12th (Top Floor) Plan





401, Sangath Mall 1, Opp. Engg. College, Sabarmati-G'nagar Highway,  
 Motera, Ahmedabad-5. Gujarat. INDIA.  
 Ph: 66663100, 98256 50505, 98256 10031  
 E-mail : [info@sangathgroup.com](mailto:info@sangathgroup.com)  
 Web: [www.sangathgroup.com](http://www.sangathgroup.com)

**Site Address:**  
 Koteshwar Hills, Nr. Apollo Hospital, Bhat - Motera Road, Airport G'nagar Highway

**SPECIFIC NOTES**

- All rights reserved to organizer for any change in plan and specifications.
- Any member whosoever is unable to pay the regular installment is liable to loose the membership and no explanations will be entertained thereafter.
- Etc, AUDA, legal charges, Stamp duty, maintenance labour cess, any other govt. levies, taxes and will be levied extra.
- This brochure is only for advertisements and it shall not be considered as part of legal documents.

[www.sangathgroup.com](http://www.sangathgroup.com)